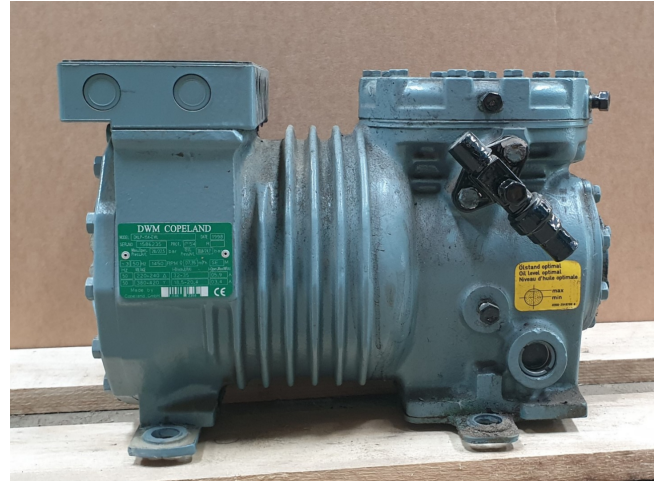


## DWM DKLP-15X-EWL

### Specifications

Marka	DWM
Typ	DKLP-15X-EWL
Czynnik chłodzący	Freon
kW at 0°C/+40°C	5,18
kW at -5°C/+40°C	4,30
kW at -10°C/+40°C	3,53
kW at -20°C/+40°C	2,30
kW at -30°C/+40°C	1,40
kW at -40°C/+40°C	0,75
kW at -45°C/+40°C	0,50
m <sup>3</sup> / h	6,33
Rozmiary	350x220x260 mm (LxWxH)
Stock	1



### Description

#### Used DWM DKLP-15X-EWL

Used DWM DKLP-15X-EWL semi hermetic piston compressor.

\*Why choose for HOSBV? We're not only the largest used refrigeration specialist in Europe, but also, we deliver all equipment including an extensive test, warranty and industrial cleaning.

\*Optional we can also perform a new paint job and arrange the logistics.

